



**SOUTH CENTRAL
HIGH SCHOOL**

EDUCATION PLAN 2025/26

southcentral.myprps.com

Date: September 2025

Principal: Ms. Dawn Peers



DAWN PEERS, PRINCIPAL

Message

South Central High School is excited to welcome everyone to the 2025–2026 school year. Our staff looks forward to the work ahead as we continue our shared journey of learning, growth, and achievement. Guided by the goals outlined in our School Plan (Igniting Minds, Kindling Hearts, and Forging Futures) we remain committed to supporting each student in reaching their full potential. Our doors are always open to families and community members. Together, we will continue to create meaningful opportunities and rich learning experiences for our rural students. We look forward to another outstanding year at South Central High School.

Principal, Dawn Peers



PARENT COUNCIL

▶ **President / Vice President**

- Mrs. Jamie Wagstaff (Resigned)
- Mrs. Nadine Rude

▶ **Secretary**

- Mrs. Simone Hagens

▶ **Treasurer**

- Mrs. Tanya Jaques



**Thank you, Parent Council, for upgrading our gym
with theatre curtains and logo mats**

Supporting Diversity & Inclusion

SCHS SCHOOL PROFILE

182

**Total Enrollment
Grades 7-12**

06

**FNMI
Students**

5

**Number of
feeder schools**

100%

**2024/25
Graduates**

7

**Support
Staff**

11

**Full time
equivalent
certified teachers**

11

**Number of
busses to
the school**

53%

**% of students
being bussed**

17

**Out of province/
country & billeting**



SCHOOL OVERVIEW

Vision

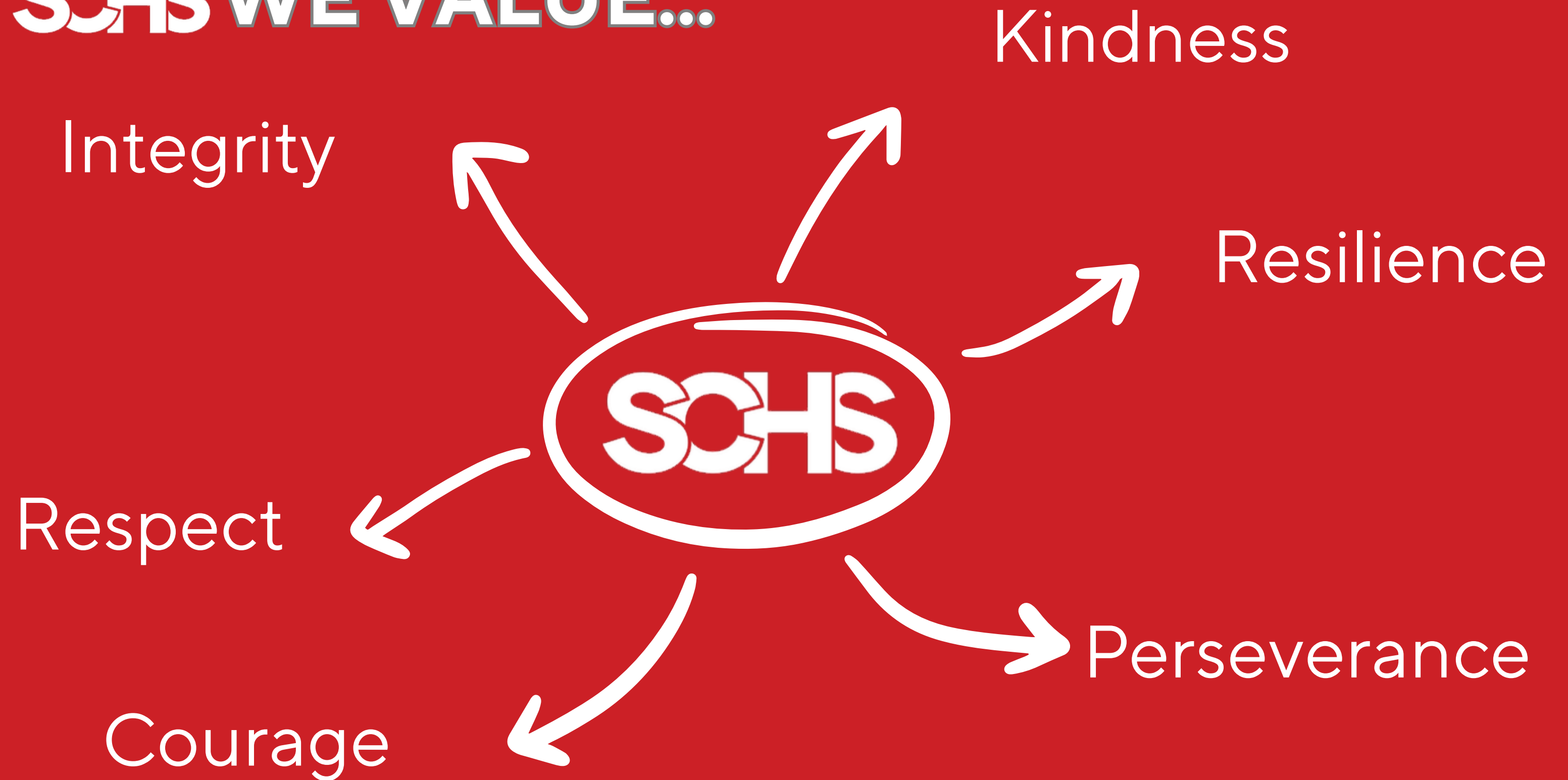
South Central aspires to develop confident, engaged and caring citizens.

Mission Statement

Achieving excellence through opportunities that build resilience, strengthen communication, and promote community



AT SOHS WE VALUE...





STAKEHOLDER ENGAGEMENT

A summary of how our school engaged stakeholders throughout the year

Parents and School Council

School Messenger | School Council meetings | Social Media | Newsletters

Teachers

Staff Meetings | School Improvement Days / Division-Wide PD | Surveys

Support Staff

Staff Meetings | School Improvement Days / Division-Wide PD | Surveys

Students

Student Council Meetings | Surveys

Community Groups

**Oyen Community Enhancement Program - student volunteers |
Collaboration with local RCMP, Oyen FCSS, Hospital and
many businesses | Collaboration with MHC and NLC**

Assurance Framework

In the Assurance Framework, all education stakeholders accept responsibility for building capacity of the education system – in classrooms, schools, school authorities and in government. Continuous improvement requires a collective approach that embraces Alberta's diversity, uses evidence to make decisions, and responds to the unique needs of students in their local contexts. South Central actively engages with its communities to better serve the students.

The Five Domains of Assurance

Assurance in the education system happens when community members, system stakeholders and education partners engage across the five domains.

Source: 2022 Funding Manual for School Authorities

The Five Domains of Assurance





RESULTS DRIVEN DECISION-MAKING

Student Growth and Achievement

- ▶ Student Learning Engagement Citizenship
- ▶ 4 yr High School Completion Rate - Excellent
- ▶ 5 yr School Completion Rate - Acceptable

Teaching and Leading

- ▶ Ensure education quality through 5 In and 5 Out vertical alignment

Learning Supports

- ▶ Welcoming, caring, respectful and safe learning environments

Governance

- ▶ Parental Involvement

Student Growth and Achievement

- ▶ We continue to grow and develop our Prairie Possibilities: Trades Academy with MHC, Health Care Aid with MHC and NLC, REIN Academy and SAHA

PRAIRIE ROSE CORE PRINCIPLES

Connect

School structures and traditions ensure that every student, staff and community member is known and cared for and contributions are celebrated.

Create

Students and PRPS staff undertake tasks that require perseverance, craftsmanship, imagination and self-discipline to foster curiosity about the world.

Care

Students and PRPS staff have the knowledge of how to care for their physical and mental health and support the well-being of others fostering a safe school environment.

Contribute

Students and PRPS staff are strengthened by acts of consequential service to others, actively ensure all belong, and participate and celebrate their rural communities.

Challenge

Students and PRPS staff develop an internal drive and desire to overcome obstacles and maximize performance through personal responsibility, resilience and initiative.



PRPS STRATEGIC GOALS



IGNITE MINDS

Background: We will ignite minds by creating cultures of academic excellence

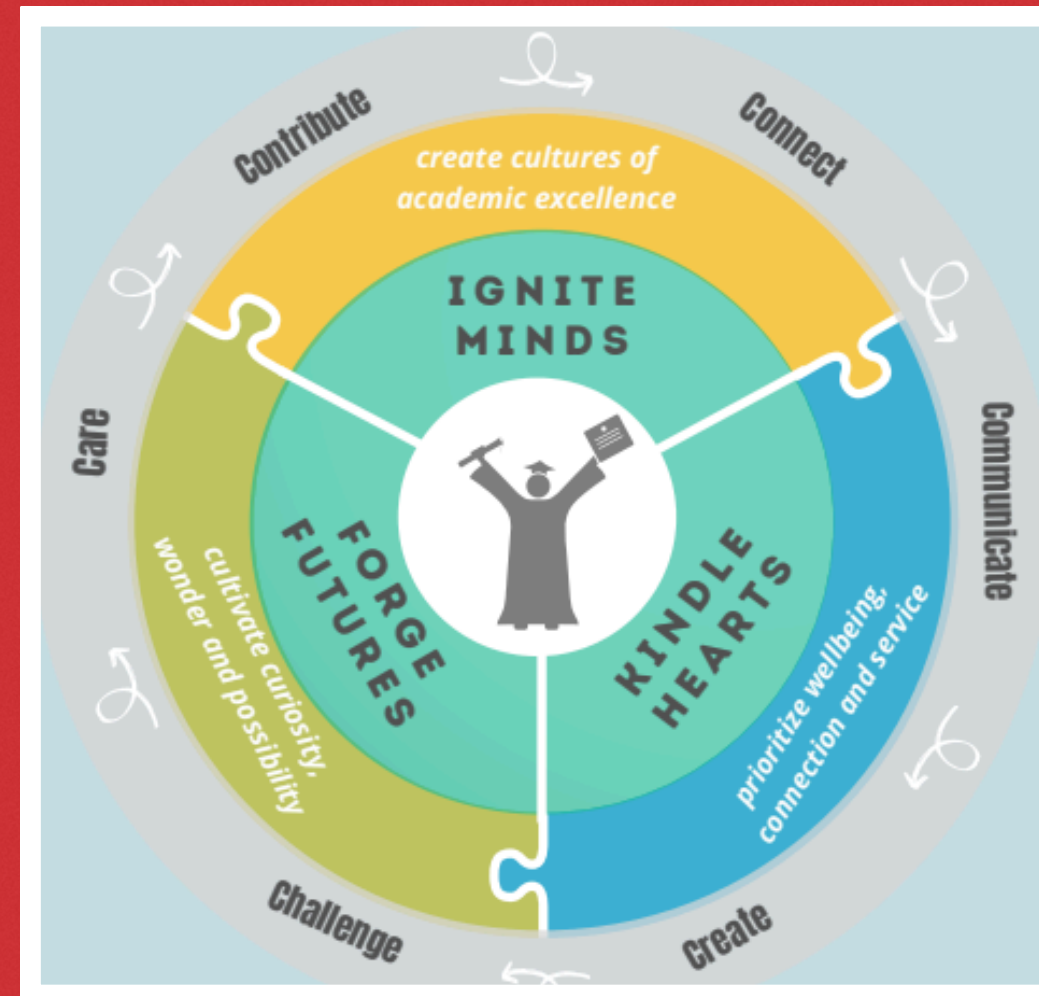
- 5 Study Tools: concept map, flash cards, practice questions, make a test & key & Cornell notes;
- 5 In / 5 Out

FORGE FUTURES



Background: Futures will be forged by cultivating wonder and possibilities.

- Trades & RAP
- Health Care Aid Programs
- Community Work Experience
- Host career fair



KINDLE HEARTS



Background: We will kindle hearts by prioritizing wellbeing, belonging and service.

- TAG Check-ins & 8am study hall
- Spirit Days (Student's Council)
- Pep Rally's
- Breakfast program & Hot Lunches
- Staff Monthly Lunches, Coffees & Bdays
- Social media promotion & communication

PRPS GOAL 1 - IGNITE MINDS



Background: We will ignite minds by creating cultures of academic excellence.



PRPS GOAL 2 - KINDLE HEARTS



Background: We will kindle hearts by prioritizing wellbeing, belonging and service.



PRPS GOAL 3 - FORGE FUTURES



Background: Futures will be forged by cultivating wonder and possibilities.





Truth and Reconciliation

SCHOOL BASED STRATEGIES

- Work with district FNMI director to bring opportunities to classes and assemblies
- Ensure that content is integrated authentically into classrooms
- Build relationships with Elders and local organizations and community members
- Continue to engage the SCHS Community through Professional Development

SCHOOL BASED PERFORMANCE MEASURES

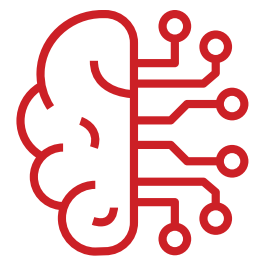
- School-wide Truth and Reconciliation learning in the weeks around September 30
- Truth and Reconciliation assembly to the school during September

TEACHING & LEARNING PRACTICES



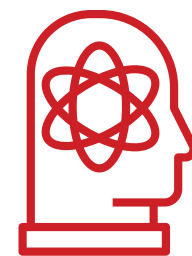
5 In / 5 Out

- Identify 5 key concepts necessary from previous course;
- Identify 5 key concepts needed to complete current course



Study Tools

- Concept Map
- Cornell Notes
- Practice Questions
- Flash Cards
- Make a Test / Key



TAG - Teacher Advisory Groups

- Check-ins
- Homework / Study
- Complete Assessments
- Parent Communication
- Attendance Tracking
- Assemblies

UNIQUE PROGRAMMING

DUAL CREDIT

- Trades
 - MHC
- Health Care Aid
 - MHC / NLC

- Badlands Baseball Academy
- Jr. Hockey Academy
- REIN

ACADEMIES



OFF CAMPUS PROGRAMS

- Work Experience
- RAP

- Community Clean-Up
- Farmer's Markets
- Hot Lunch
- Assist Coaching

VOLUNTEERING

ATHLETICS & EXTRACURRICULAR

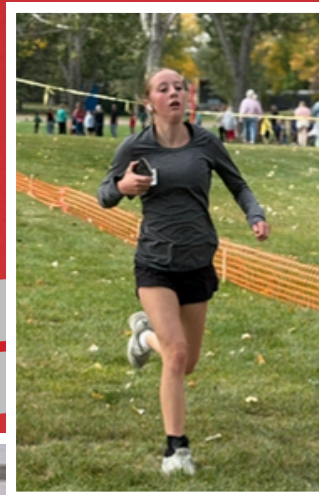


Cross Country

- Ladies / Mens

Golf

- Ladies / Mens



Alaina Hagens



Volleyball

- Jr. High Girls / Boys
- Sr. High Girls / Boys



High School Rodeo

- Jr. High Girls / Boys
- Sr. High Girls / Boys



SCHS Volleyball Pep Rally



Olivia Wagstaff

ATHLETICS & EXTRACURRICULAR



REIN Program

- Jr and Sr Girls and Boys



Basketball

- Jr. Girls / Boys
- Sr. Girls / Boys



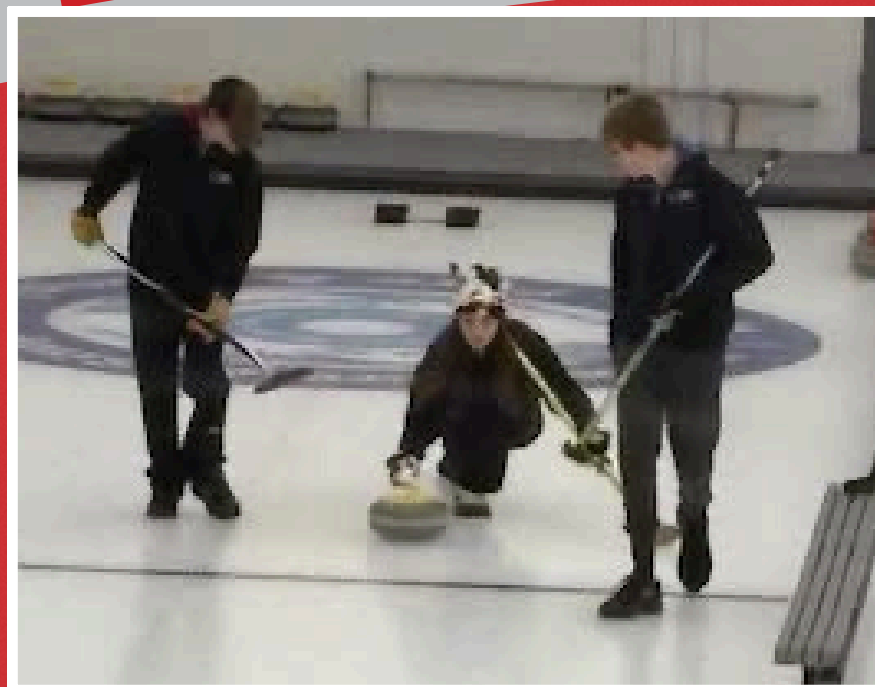
Drama

- Club



Curling

- Jr and Sr Girls
- Jr and Sr Boys
- Mixed



ATHLETICS & EXTRACURRICULAR



Badminton

- Jr. High Girls
- Jr. High Boys
- Sr. High Girls
- Sr. High Boys

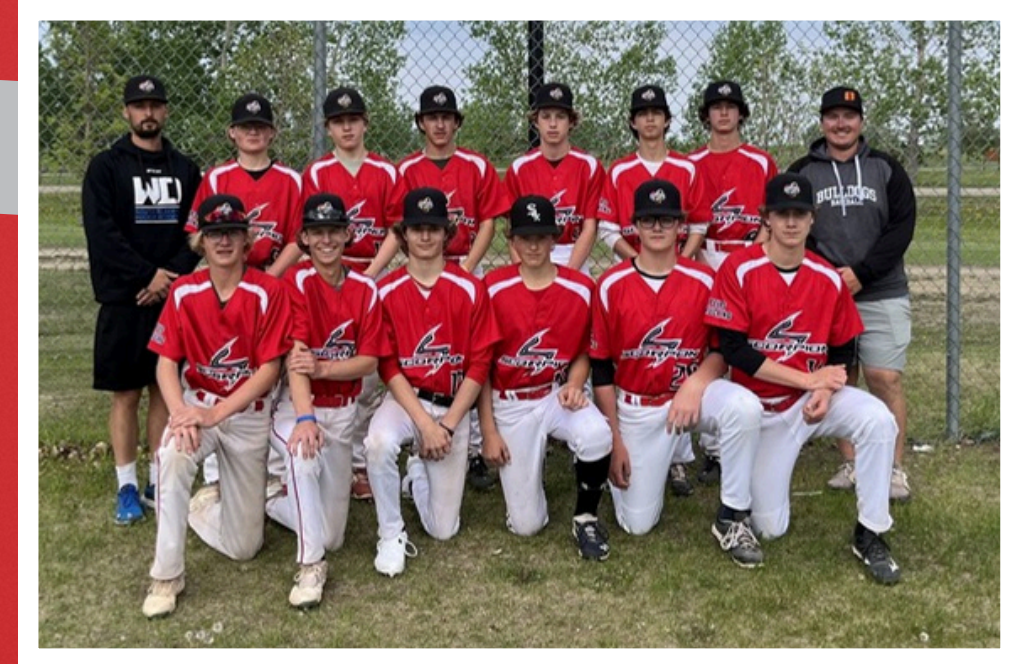


Track & Field

- Jr. High Girls
- Jr. High Boys
- Sr. High Girls
- Sr. High Boys

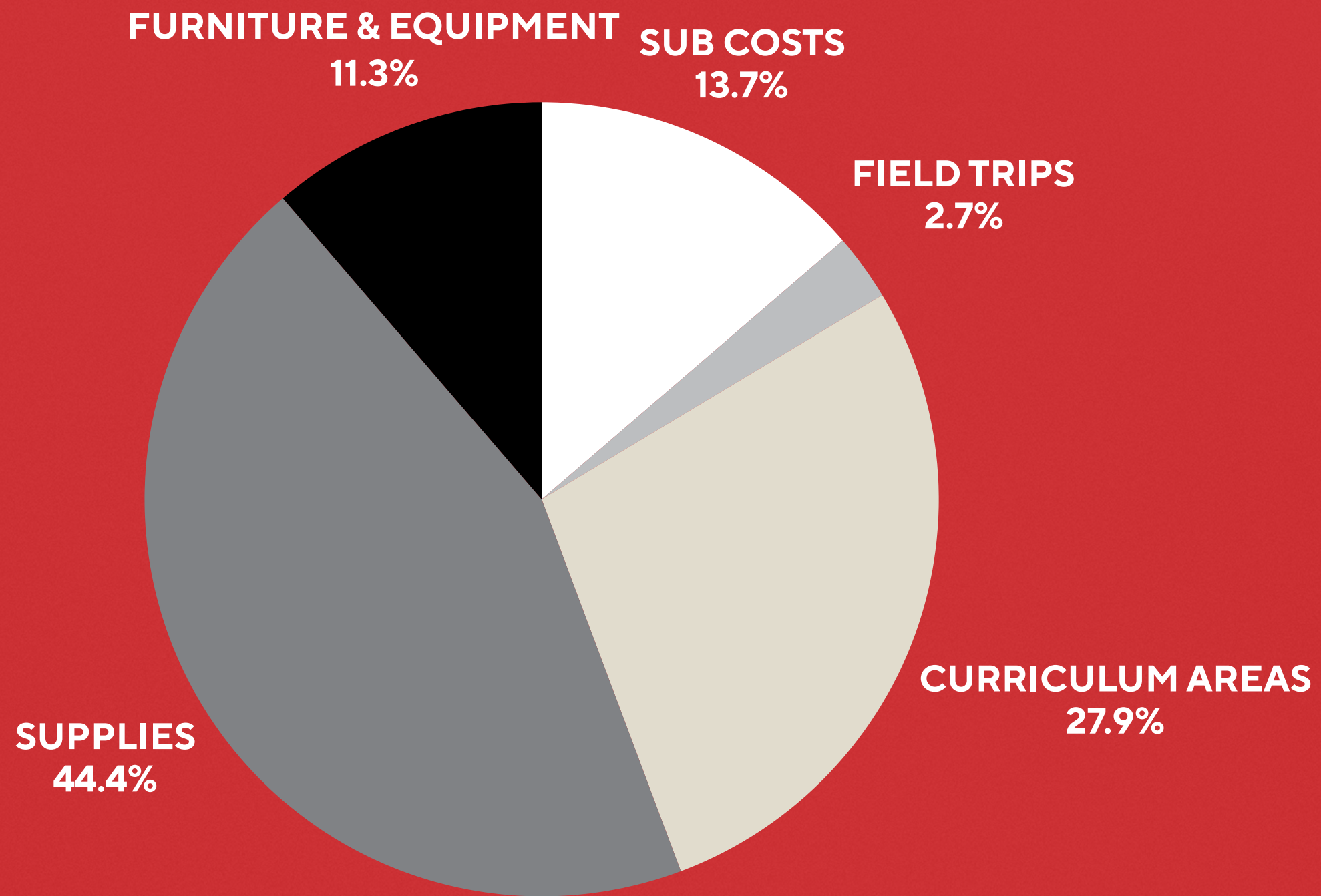


Sr. Girls Softball



Sr. Boys Baseball

BUDGETING PRIORITIES



STAFF & ASSIGNMENTS



Ms. Dawn Peers

Principal

- Administration
- CALM 10
- Math 31 (VC)
- Physics 30 (VC)



Mrs. Ruth Munroe

Office Administrator

- Communication
- Finances
- PowerSchool



Mrs. Dustin Angle

Teacher

- Sr. High CTS
- Jr. High CTF
- Trades



Mrs. Vicki Duffield

Educational Assistant

- Jr High EA
- Library

STAFF & ASSIGNMENTS



Mrs. Kendra Girletz

Teacher

- Math 20-2
- Math 10C
- Math 10 Prep
- Jr. High Math



Mrs. Sarah Grover

Teacher

- Jr. High English / Health
- LST



Mrs. Sarah Hagens

Teacher

- Chemistry 20/30
- Biology 20/30
- Science 10/14/24
- Trades / LST



Mrs. Shannon Hauck

Teacher

- Sr. High CTS: Foods/Fashion
- Jr. High CTF: Foods/Fashion
- LST

STAFF & ASSIGNMENTS



Mr. Zach Hay

Teacher

- Athletic Director
- Sr. High Phys Ed
- Jr. High Phys Ed
- Jr. High CTF



Mrs. Carmen Hoffmann

Educational Assistant

- Sr. High EA
- Jr. High EA
- Breakfast Program



Mrs. Lacey Hogan

Educational Assistant

- Jr. High EA



Mrs. Brittany Molzan

Teacher

- Math 30-1
- Math 30-2

STAFF & ASSIGNMENTS



Ms. Ann O'Connor

Educational Assistant

- Sr. High EA



Mr. John Rolheiser

Teacher

- Jr. High Science
- Jr. High Phys Ed
- Jr. High CTF
- LST
- Badger Coach / Work Ex



Mrs. Tricia Rolheiser

Teacher

- Math 20-1
- Math 10-3 / 20-3
- Science 9
- Jr. High Social
- Physics 20 (VC)
- Work Ex
- Badger Billet Coordinator



Ms. Lara Stockman

Teacher

- English 30-1/30-2
- English 20-1/20-2
- English 10
- English 9 / Health 9

STAFF & ASSIGNMENTS



Mrs. Erika Tessier

Teacher

- Social 30-1 / 30-2
- Social 20-1 / 20-2
- Social 10-1 / 10-2
- Academic Advising



STAY CONNECTED WITH US!



Phone

+1 (403) 664-3644

Email

ruth.munroe@prrd8.ca

Website

southcentral.myprps.com

Location

105 3 Ave W, Oyen, AB T0J 2J0

Social

[SCHS is on Facebook!](#)

